

'Black Diamonds' are arrested caries!

Arrested caries means minimal intervention.

Minimal intervention treatment:

- ◆ readily acceptable
- ◆ less discomfort
- ◆ less extractions
- ◆ reduction in emergencies
- ◆ reduction in need for hospital admissions



WHY CONSIDER THE ARM-ER APPROACH?

Points to ponder....

The majority of Queensland (and an ever increasing number of Queenslanders) are living without water fluoridation. We have the highest rate of early childhood caries in the nation and the adult population, sadly, fares no better.

- ◆ 51% of six year olds and 45% of 12 year olds experience tooth decay.
- ◆ 25% of adults have untreated tooth decay.
- ◆ ATSI population has 50% higher experience than this.
- ◆ 50-70% higher incidence of decay in low socio-economic groups.
- ◆ 63,000 hospitalisations for dental treatment
- ◆ Dental emergencies are the 3rd highest reason for Acute Presentations!



Cathy Boyce
Oral Health Therapist
cathythetoothfairy@gmail.com

© Cathy Boyce 2017

THE ARM-ER® APPROACH TO CARIES MANAGEMENT



Assess.... Arrested?
Redefine....Remineralised?
Manage –
Educate and then
Review : Repeat : Restore:
Rehabilitate : Re-establish

USING SILVER FLUORIDES TO ASSESS AND REDEFINE CARIES STATUS – *THEN* CHOOSE THE MANAGEMENT PLAN!

silver ion = wrecking ball

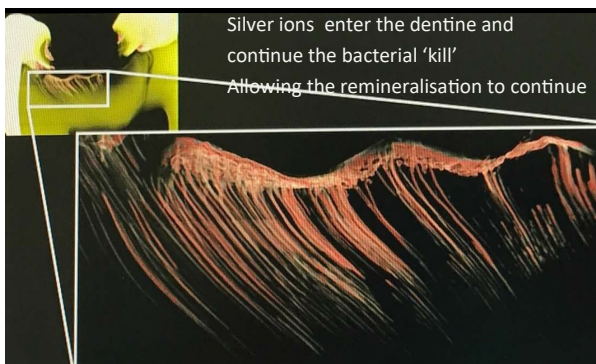
Antimicrobial:

- denatures *all* proteins.
- breaks cell walls & membranes.
- inhibits DNA replication.



Strengthens dentin:

- protective layer formed by reaction with dentin proteins is acid resistant (Hill & Arnold, 1937).
- penetrates ~50µm.



The use of silver fluorides as an adjunct caries management tool is effective in the following way:

- ◆ Active caries is detected
- ◆ Bacterial control is established
- ◆ Immediate improvement of oral health status
- ◆ Remineralisation *and* associated desensitisation is achieved

Then a management plan can be formulated -

- ◆ Offering improved quality of care, (with short and long term gains)
- ◆ Allows time for management plan to be formulated
- ◆ Very cost effective so immediate or future care plan can be organised

'The ARM-ER® approach'

Uses the capabilities of silver fluorides within a caries management plan with benefits across the **community**.

The National Oral Health plan 2015-2024 identified the following priority groups:

- Aboriginal and Torres Strait Islander
- Socially disadvantaged and low income
- Rural and Remote
- Additional specialised needs groups including:
 - ⇒ Correctional facilities
 - ⇒ Nursing homes
 - ⇒ Medically Compromised
 - ⇒ Paediatric patients